

ESP Packer Penetrator



The Most Reliable Packer Penetrators on the Market

Built to Thrive in the Harshest Well Conditions around the World

No ESP Cable Splice Required

Innovex's experience in ESP Packer Penetrators is second to none, delivering the most reliability in the industry.

Our full range of packer penetrator solutions meet your pressure requirements, well bore conditions, and casing program designs. A robust stock of inventory secures short lead times while training and onsite field support with our certified technicians ensure success on every ESP well completion.



PACKER INTERFACE SOLUTIONS

ESP Production Packers are typically offered in either Dual-String or Multi-Port designs. Innovex employs a full line of solutions for both installation options.

Dual String ESP Packer Penetrators use a bushing to interface with the ESP side of the packer offering a variety of thread connections to allow for various capillary lines and CT lines supporting the ESP. All lines are secured with metal-to-metal sealing tube fittings.

Multi-Port ESP Packer features independent porting for each conductor leg (Phase) to pass through the packer. The penetrator is secured with metal-to-metal sealing tube fittings.



Multi-Port



Dual-String

DOWN HOLE PRESSURE RATINGS

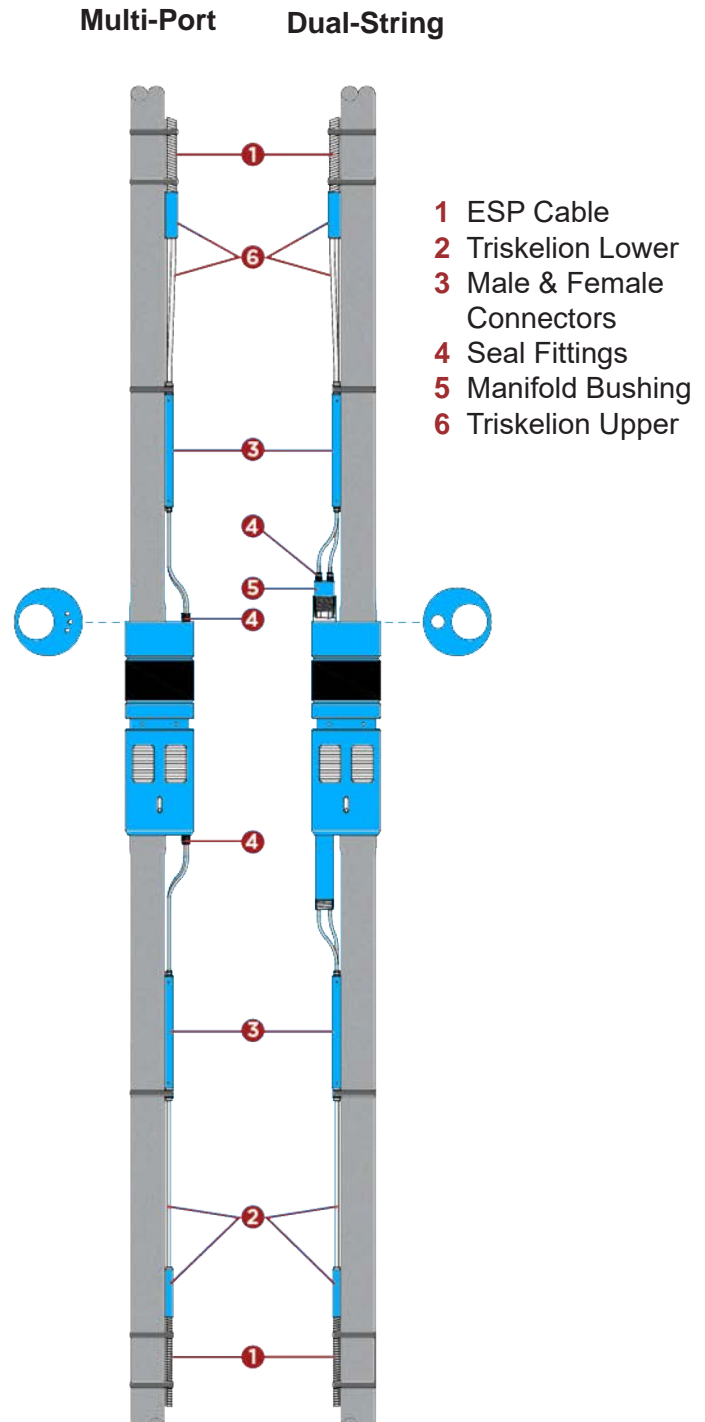
Whether you are boosting production or producing down the decline curve, we have a solution for your needs.

Innovex offers a full range of pressure ratings, matching your downhole packer, to assure reliability and high production rates. Our standard 5k, 8k and 10k PSI penetrators are designed with superior materials to meet your requirements.

HARSH ENVIRONMENT PACKER PENETRATORS

Innovex's Harsh Environment packers use a special selection of materials to provide the longest performance and superior protection within the highest levels of H₂S and CO₂.

H₂S exposure testing was employed to identify design enhancements and the correct selection of materials to provide the highest level of performance in our customer's operations. While our standard design have far exceeded our customers' expectations in the harshest of fields, we recommend our Harsh Environment Penetrator design when H₂S partial pressure exceeds 1.5 percent.

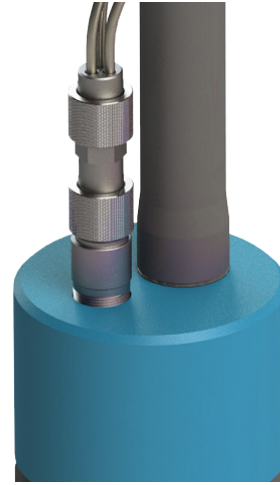


STANDARD AND SLIMLINE DESIGNS

The Standard Packer Penetrator design features a small 1.25" OD annular space requirement to make up the ESP cable above and below the packer.

Our new Slim-Line (SL) Packer Penetrator solution makes it possible to install an ESP in the tightest well designs with only an .875" clearance required.

This ultra slim design allows for the most versatility in tight well designs and supports a full range of ESP pumps on the market while still offering the performance our customers have come to expect.



TRI-LEAD PACKER PENETRATOR

Innovex has routinely outperformed the competition by twice the run life in the harshest fields around the world. In extremely harsh wells, we recommend the Innovex Tri-Lead Packer Penetrator to eliminate connections below the ESP Packer.

The Motor Lead Extension (MLE) is run continuously from the ESP through the packer where the Tri-Lead utilizes a metal to metal seal on the conductors above the packer. A standard penetrator connection is then made to the ESP cable above the harsh well conditions and below the packer to deliver ultimate performance.

PACKER PENETRATOR SECTION GUIDE

Series	P/N	Connection Size	Tubing Size	Working Pressure Rating	Conductor		Well Conditions		
					Wire	Amps	H2S* Partial Pressure	CO2	Temp.
Standard Packer (1.125" OD Connection)	SP25-5K	1.125" OD (31.75mm)	1/4" OD	5,000 PSI	#6 AWG	90	Less than 1.5%	NACE Compliant	375° F 190° C
	SP38-5K			5,000 PSI					
	SP38-8K		3/8" OD	8,000 PSI	#5 AWG	160			
	SP38-10K			10,000 PSI					
	SP12-5K		12mm OD	5,000 PSI	#4 AWG	250			
	SP12-8K			8,000 PSI					
	SP12-10K			10,000 PSI					
Harsh Environment (PEEK Insulation)	HE38-5K	1.125" OD (31.75mm)	3/8" OD	5,000 PSI	#5 AWG	160	More than 1.5%	NACE Compliant	375° F 190° C
	HE38-8K			8,000 PSI					
	HE38-10K		10,000 PSI						
	HE12-5K		12mm OD	5,000 PSI	#4 AWG	250			
Slim-Line (.875" OD Connection)	SL25-5K	.875" OD (22.23mm)	1/4" OD	5,000 PSI	#6 AWG	90	Less than 1.5%	NACE Compliant	375° F 190° C
	SL38-5K		3/8" OD						
	SL38-8K								

* While we have seen our standard penetrators perform well in high levels of H₂S, it is our recommendation to use a Harsh Environment or TriLead Solution in wells seeing greater than 1.5% Partial Pressure.



packerpenetrator_112519